

Wade Tours

BUY ONE
GET ONE
FREE

WHEN BOOKED
BY 12/31/2023



Rhine Castles & Moselle Vineyards

the Netherlands • Germany • France

Departure Date: August 28, 2024

**Mayflower**
CRUISES & TOURS
A DIVISION OF THE SCENIC GROUP

Rhine Castles & Moselle Vineyards



DAY 1 Depart the USA: Depart the USA on your overnight flight to Amsterdam, the Netherlands.

DAY 2 Amsterdam, the Netherlands: Upon arrival in Amsterdam, you will be met at the airport and transferred to your innovative Emerald Cruises Star-Ship, where your friendly captain and crew will welcome your arrival. Please book your flight to arrive in Amsterdam before 5:00pm. **Meal: D**

DAY 3 Utrecht: As part of your EmeraldPLUS program, start the day by enjoying a canal cruise through the Oudegracht or Old Canal. Not only is this the oldest in Utrecht, but it is also older than the canals in Amsterdam. For centuries, along the water, the wealthiest have built mansions with the peculiarity of having warehouses and service entrances just above water level. Undoubtedly, the castle of Oudaen stands out among all the rest: an urban castle well preserved despite being more than eight centuries old. **Meals: B, L, D**

EmeraldACTIVE: Guided bike tour around Utrecht (instead of included canal cruise)

EmeraldPLUS: Canal cruise and cheese tasting

DAY 4 Nijmegen: Today you will visit the Kinderdijk Windmills, a UNESCO World Heritage site. This unique collection of nineteen authentic 18th-century windmills is considered a Dutch icon across the globe. **Meals: B, L, D**

DAY 5 Koblenz, Germany: Wonderfully maintained inside and out, Marksburg Castle boasts a selection of typical interiors, including the castle kitchen, the knight's hall, the armoury and an inviting wine cellar. The attractive light-stoned walls of the castle are protected by an outer fortress. With a single tower peering over the turrets and castle walls, it resembles something you would find in a Brothers Grimm tale. This evening, local entertainment is provided onboard. **Meals: B, L, D**

EmeraldACTIVE: Hike to Marksburg Castle

DAY 6 Bernkastel: Dating back to 3000 BC, Bernkastel is situated along the banks of the Moselle River, and home to well-preserved buildings dating back to 1416. Enjoy a guided walking tour, where you will have the opportunity to stroll through the medieval marketplace with its gabled timber-framed houses, castle ruins and town gate. Or, take part in an active hike to the Landshut Castle Ruins overlooking the Moselle. **Meals: B, L, D**

EmeraldACTIVE: Active hike to Landshut Castle Ruins (instead of included walking tour)

DAY 7 Cochem: Enjoy the enchanting town of Cochem during a guided tour of its well-preserved sites. Wander through the quaint alleyways and see the remains of the historic town wall with its old fortifications alongside the town hall and its many other gems. Visit Reichsburg Castle, perched on a spectacular hill 300 feet above the Moselle Valley. See the dining room, living room with family portraits, secret passageways, and learn about the history of this magnificent castle. **Meals: B, L, D**

EmeraldACTIVE: Cycling along the Moselle (instead of included tour)

DAY 8 Rudesheim: As part of your incredible EmeraldPLUS program, visit the grand Schloss Johannisberg Winery. Set in the breathtaking Rheingau region, the legendary Schloss Johannisberg is steeped in history, cultivating exquisite wine for over 1000 years. The first Riesling winery in the world, at Schloss Johannisberg, discover a unique wine culture and fabled history during this exclusive tour. Set over 124 acres in front of the Taunus mountains, the onsite 300-acre forest grows native oak to make the wooden barrels used for producing this exemplary wine. These extra-special barrels are then kept in the 900-year-old abbey cellar, known as 'Bibliotheca Subterranea', where over 25,000 precious wines are stored. Alternatively, participate in an active hike through vineyards to the historical Niederwalddenkmal Monument. This evening, local entertainment is provided onboard. **Meals: B, L, D**

EmeraldPLUS: Wine visit and tasting at Schloss Johannisberg

EmeraldACTIVE: Active Hike to Niederwalddenkmal Monument (instead of included tour)



Explore the picturesque village of Colmar, France

DAY 9 Mainz: Your day will start with a guided tour of Mainz and a visit to the impressive sandstone cathedral of the tremendous Old Town. Departing Mainz early afternoon, the remainder of the day is spent cruising along the Rhine to the next port of call. **Meals: B, L, D**

DiscoverMORE: Visit to Gutenberg Museum & workshop (additional expense)

DAY 10 Kehl – Strasbourg, France: This morning, dock in Kehl and journey by coach to the medieval capital of France’s Alsace Region, Strasbourg. The best way to discover Strasbourg’s charm is via its quaint waterways. Embark on an EmeraldPLUS traditional canal boat tour. Relax as you pass through petite France, full of storybook canals, half-timbered houses and narrow lanes. Witness the covered bridges and the Vauban Dam before reaching the UNESCO World Heritage Neustadt imperial quarter, where many of Strasbourg’s administrative buildings are based. This afternoon, enjoy free time to explore at leisure. **Meals: B, L, D**

DiscoverMORE: Alsace wine route with tasting (additional expense)

DAY 11 Breisach, Germany – Colmar, France: Commence your magical morning with a tour of Colmar. As you walk down the cobblestone lanes, it’s easy to imagine the characters from the Grimm’s Fairy Tales here, with half-timbered façades adorned with window boxes full of colorful blooms. Alternatively, embark on a canoeing adventure on the banks of the Rhine. **Meals: B, L, D**

EmeraldACTIVE: Canoeing on the banks of the Rhine (instead of included tour)

DAY 12 Basel, Switzerland – Zurich / USA: After breakfast, it’s time to say farewell to your fellow guests. Disembark your Star-Ship for your transfer to the airport and take with you memories of all the beautiful destinations you have visited. Flights should depart Zurich after 12:00 noon. **Meal: B**

Itinerary is subject to change.



Exceptional Inclusions

- **29 Meals:** 10 breakfasts, 9 lunches and 10 dinners
- **Airport transfers** on tour dates when air is provided by Mayflower Cruises & Tours
- Visit **three countries**
- **Ten-nights in a suite or stateroom** of your choice onboard the vessel
- **First-class service** by an English-speaking crew
- **Onboard Activity Manager** will support all EmeraldACTIVE excursions and host daily onboard wellness activities, games, classes and evening entertainment
- **All gratuities included**
- **Shore excursions** with English-speaking local guides
- Visit **UNESCO World Heritage Sites**
- Personal **listening device** for shore excursions
- **All meals included** onboard
- Variety of **international cuisine**
- Complimentary **regional wines, beer and soft drinks** with onboard lunches and dinners
- Complimentary **bottled water** in your stateroom
- Complimentary **WiFi** onboard
- Complimentary **bicycles onboard** for use ashore
- **All port charges included**

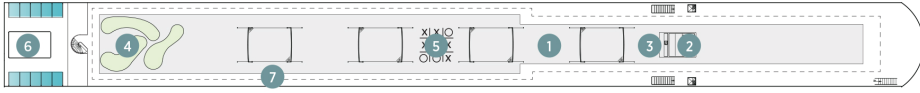
CRUISE ACCOMMODATIONS

Days 2 through 11 – Aboard an Emerald Cruises Star-Ship
Pre-cruise hotel stays available in Amsterdam. Call for details.

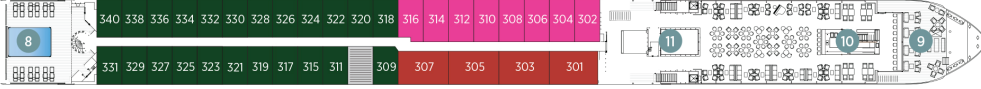
Emerald Cruises Star-Ships

Built: 2014-20 **Speed:** 15.5 mph **Staterooms:** 19 **Suites:** 72 **Length:** 443 ft. **Crew:** 47

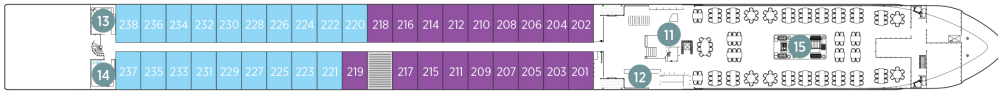
SUN DECK



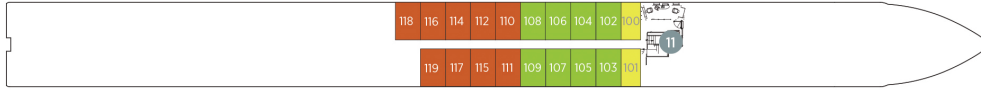
HORIZON DECK



VISTA DECK

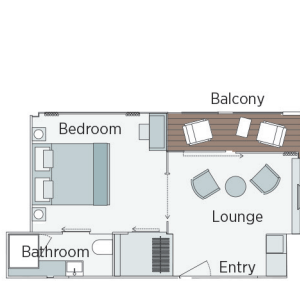


RIVIERA DECK



Public Areas and Ship Amenities

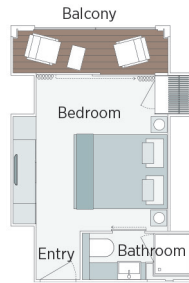
- 1 Sun Deck with Deck Chairs
- 2 Navigation Bridge
- 3 Sky Barbeque
- 4 Golf Putting Green
- 5 Games Area
- 6 Retractable Glass Roof
- 7 Walking Track
- 8 Daytime Pool / Evening Cinema
- 9 The Terrace
- 10 Horizon Bar and Lounge
- 11 Elevator
- 12 Reception
- 13 Wellness Area
- 14 Fitness Area
- 15 Reflections Restaurant



Owner's One-Bedroom Suite

315ft²

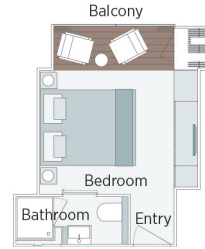
CAT SA



Grand Balcony Suite

210ft²

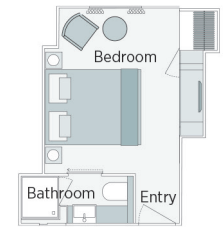
CAT S



Panorama Balcony Suite

180ft²

CAT A CAT B CAT C



Emerald Stateroom

162ft²

CAT D CAT E

2024 Departure Date
Rhine Castles & Moselle Vineyards

		AUG 28	
CAT	STATEROOM / SUITE	DECK	
E	Emerald Stateroom	Riviera	PER PERSON TWIN: \$5,595; SINGLE ROOM ADD: + \$5,595
D	Emerald Stateroom	Riviera	PER PERSON TWIN: \$6,095; SINGLE ROOM ADD: + \$6,095
C	Panorama Balcony Suite	Vista	PER PERSON TWIN: \$7,095; SINGLE ROOM ADD: + \$7,095
B	Panorama Balcony Suite	Vista	PER PERSON TWIN: \$7,295; SINGLE ROOM ADD: + \$7,295
A	Panorama Balcony Suite	Horizon	PER PERSON TWIN: \$7,495; SINGLE ROOM ADD: + \$7,495
S	Grand Balcony Suite	Horizon	PER PERSON TWIN: \$8,545; SINGLE ROOM ADD: N/A
SA	Owner's One-Bedroom Suite	Horizon	PER PERSON TWIN: \$9,795; SINGLE ROOM ADD: N/A

**BUY ONE GET ONE FREE
OR SINGLE SUPPLEMENT WAIVED**
WHEN BOOKED BY DECEMBER 31, 2023

Call for air rates and schedules from your city to Amsterdam, the Netherlands, returning from Zurich, Switzerland.

Air itineraries may not be available until documents are received. Air seats are assigned by the airline for the entire group. Seat changes can only be attempted upon receipt of tickets and documents at which time availability may be limited. If specific seat assignments are vital to your reservation, we recommend individual air reservations rather than booking air with the group.

Completed reservation form, deposit and passport copy are due at time the time of reservation.

Travelers Protection Plan (TPP) for River Cruises

This nonrefundable fee will provide a refund to you during the instance that you have to cancel your trip. The cancellation has to be for a covered reason (see Plan for details on coverage) and we have to be notified at least one day prior to departure. If you must leave the tour early due to personal illness or the illness or death of an immediate family member, TPP will provide a refund for any unused services after the departure of the tour. Other benefits include medical expenses for illness and injury, emergency transportation, 24 hour hot line and lost or stolen baggage assistance. Return air transportation is included ONLY if your air tickets are purchased through Mayflower Cruises & Tours. Please review the Plan for details on coverage. Should you choose not to purchase our TPP, the following per person cancellation charges will be assessed for all tours and optional excursion costs:

- 91 days or more prior to departure: Deposit amount
- 90 days to day of departure: 100% of total tour
- No refund on unused portions of the tour

TOUR ACTIVITY LEVEL



Exclusions: Mayflower Cruises & Tours reserves the right to alter its Refund and Cancellation Policy when a substantial amount of cancellation or postponement of travel is attributable to: conditions resulting from an act of God, natural or man-made disaster, fire, government action, civil disorder, war, hostilities between nations, or unavailability of transportation through no fault of Mayflower Cruises & Tours. *Plan and benefits offered and administered by Trip Mate, Inc.*

FOR RESERVATIONS OR INFORMATION CONTACT:

Wade Tours
Crystal DeLorenzo
(518) 355-4500
crystal@wadetours.com

797 Burdeck St, Schenectady, NY 12306

